

Figure 1: ESKOM: Dealesville - Kimberley - Kathu

Manganore to Ferrum Substations

Topography Map: Scanned 1:250 000

**ENGINEERING GEOLOGICAL SURVEY:**

As shown on plan and described in report

Engineering Geological Investigation to determine the potential for the upgrading of Power lines from Dealesville to Kuruman, with Manganore to Ferrum Substation corridors.

REPORT NUMBER: GS201403KMF DATED: May 2014



Report by:

**GEOSET cc**

CK 99/65610/23

RAADGEWENDE INGENIEURS- EN OMGEWINGSGEOLOE  
CONSULTING ENGINEERING AND ENVIRONMENTAL GEOLOGISTS

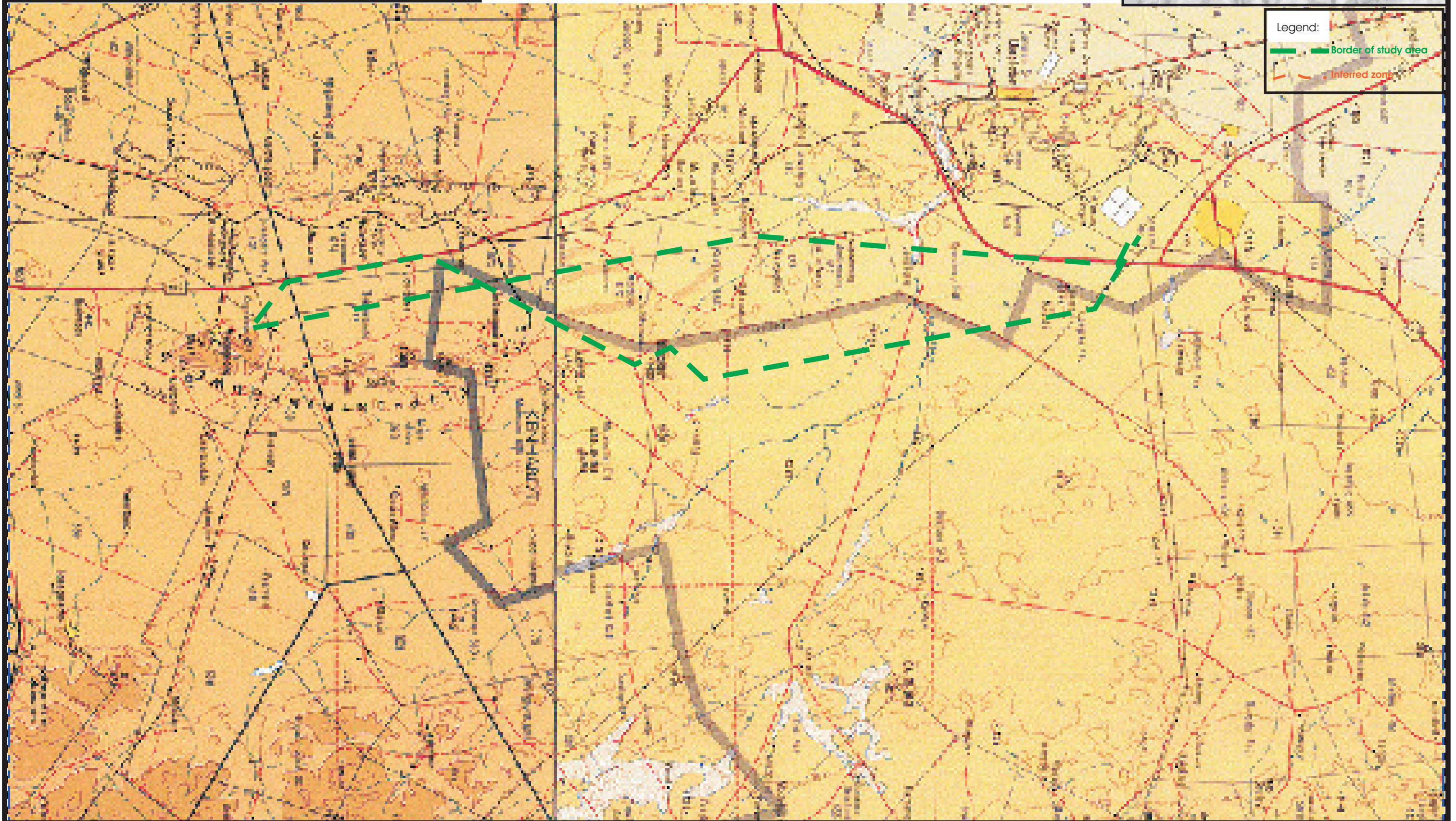
POSBUS/PO BOX 60995  
KAREN PARK 0118  
WEBFAX: 086 658 3190

TEL/FAX: (+2712)(012) 525 1004  
CELL: (+2782)(082) 925 4075  
e-mail: davidsvdm@webmail.co.za

Ingenieursgeoloog  
Engineering Geologist

**David S. van der Merwe**

Bsc.(Hons.)(Eng. Geol.), Pr.Sci.Nat.; MSAIEG; MEESG.



Legend:

- Border of study area
- Inferred zone